

### TRITON'S TYPE C SYSTEM WATERPROOFS FARMHOUSE BASEMENT

Triton approved contractor, Ross Tetlow of Tetlow Construction, installed Triton's AquaPump XL Dual Sump Kit as part of a Type C waterproofing system in the basement of a 19th century farmhouse. At the start of the works, Ross and his team had discovered several brick attenuation tanks beneath the old stone floor – all full to floor level with water or sludge. After being pumped out, they all refilled with water overnight.

Industry best practice recommends that two pumps with one powered via a back-up source should always be installed as part of a Type C waterproofing system. Following the discovery of the brick tanks, Ross chose to install Triton's AquaPump XL Dual Sump Kit, into the basement floor, because its large capacity sump and twin pump configuration is designed to cope with the potential risk of significant water ingress. The kit includes two RS55 pumps which have a maximum flow rate of 300l/minute.

The brick tanks were pumped out again and filled with loose chippings to reduce their volume. A new concrete floor was then laid with Triton's AquaChannel drainage conduit installed around the perimeter.

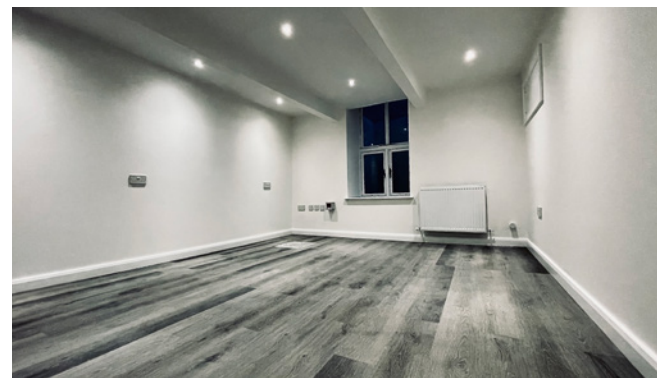
To complete the fully sealed cavity drained system, Ross installed deep studded Platon P20 membrane to the floor and Platon P8 membrane to the walls. Platon Tape and Cornerstrip were used to seal the joints between drops of wall membrane and the wall/floor junction.

Any water ingress will drain from the tanks or the Aqua Channel to the XL sump from where it will be pumped to a natural drainage point outside. The team laid a chipboard floor over an insulation layer and fitted a 70mm stud partition system to the walls. The now dry and habitable basement will be used as a home office and gym.

Tetlow Construction was established in 2005. The Rochdale based company specialises in historic and listed building renovation and waterproofing projects.



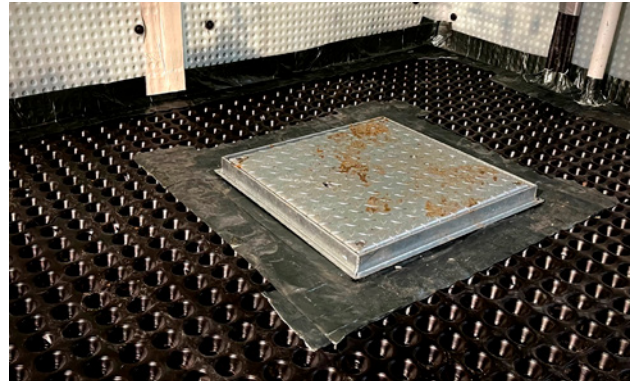
*The basement prior to conversion*



*The renovated rooms are now ready for use as an office and gym*



New XL sump set in floor



Platon Cornerstrip used to seal around sump cover



Rodding Eye set in Aquachannel perimeter conduit to allow for future maintenance of system



Platon P20 membrane laid to floor, Platon P8 membrane on walls, joints sealed with Platon Cornerstrip

### **Triton Systems**

Units 3 – 5 Crayford Commercial Centre, Greyhound Way,  
Crayford, Kent DA1 4HF

Tel: 01322 318830

Fax: 01322 524017

Email: [info@tritonsystems.co.uk](mailto:info@tritonsystems.co.uk)

[www.tritonsystems.co.uk](http://www.tritonsystems.co.uk)

### **Contractor:**

Tetlow Construction

[www.tetlowbuildingcontractors.co.uk](http://www.tetlowbuildingcontractors.co.uk)

