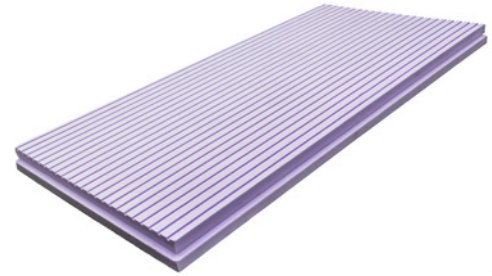


Triton TR500 Basement Board

Combined insulation and spacing layer for cavity drain membrane systems.

Triton TR500 Basement Board has been specifically developed to assist in the installation of cavity drain waterproofing systems within basement structures, where an insulating spacing layer on top of the floor slab is required to accommodate an Aquachannel drainage conduit.

The product is manufactured from a rigid closed-cell grade of waterproof extruded polystyrene. This high compressive strength material has a very impressive long-term compressive creep property of 225KN/m², meaning that even after 50 years the material will only compress by 2% if it is loaded at 225KN/m².



TR500 Basement Board is normally used as a combined insulation and spacing layer for cavity drain membrane systems, where the Aquachannel conduit cannot be placed within a pre-formed recess. See Typical Detail TWS-066 below.

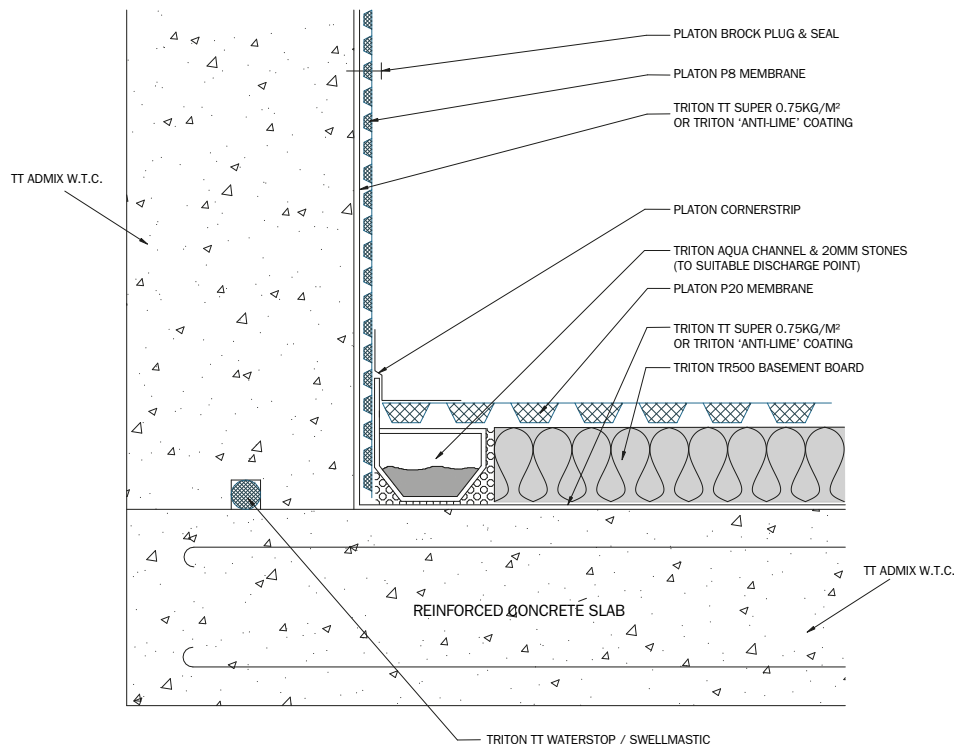
Installation

TR500 Basement Board has been developed to be installed above the concrete basement floor slab and under the 20mm Platon P20 cavity membrane and floor screed. The boards are 50mm thick so can be installed to create an insulated spacing layer that finishes flush with the internal perimeter drainage conduit.

The boards are grooved on one surface, 6mm x 6mm at 25mm spacing, to assist with drainage.

The boards are laid grooves down and the edges have a shiplap profile which helps stabilise the boards during laying.

Overlying with a lightweight floor build-up is possible if the TR500 Basement Board is fixed down using Plaster Plugs of suitable length (one fixing in each corner 100mm inboard and one in the centre).



TWS-066-1(D)

Technical Data

Art. No.	Thickness (mm)	Nominal Area (mm)	Effective Area (mm)	Edge Treatment
AA/TR500	50	1200 x 600	1185 x 585	15 mm Shiplap Edge

Property	Standard	Unit	Value
Compressive Stress at 10% deformation	EN826	KN/M2	500
Compressive creep (50 years @ 2% deformation)	EN12087	KN/M2	225
Design Thermal Conductivity	EN10456	W/mK	0.034
Long term Water absorption by total immersion	EN12091	%VOL	<1
Coefficient of Thermal Expansion	–	mm/mK	0.07
Maximum Working Temperature	–	°C	75

Packaging

Pack quantity: 8 boards (5.76 m²)

Pallet quantity: 10 packs (57.6 m²)

Please contact us for waterproofing specification advice across our range of external, internal and integral waterproofing methods and materials.

Triton Contact Details:

Triton Systems
Units 3 – 5 Crayford Commercial Centre, Greyhound Way, Crayford, Kent DA1 4HF

Tel: 01322 318 830

Fax: 01322 524 017

Email: info@tritonsystems.co.uk

www.tritonsystems.co.uk