



Triton Cemflex Steel Waterbar – the fully weatherproof waterbar

SUITABLE FOR INSTALLATION IN ALL WEATHER CONDITIONS

A key challenge for installers of quality ICF systems, or pre-cast concrete twin wall systems, in below ground basement construction, is forming a good watertight seal between the ICF blocks or twin wall panels and the basement slab.

Traditional hydrophilic waterstops have been around for many years and can be used successfully in most applications. However when the blocks forming the structure are not infilled with concrete for some time and the waterstop is rained on within the open blocks, this will cause it to start swelling prematurely and result in subsequent underperformance in a very critical location.

Attempting to remedy this by the removal of the waterstop is usually impossible due to its location inside the ICF blocks or twin wall panels.

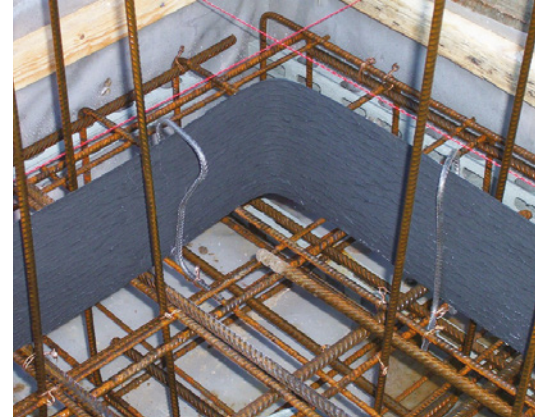
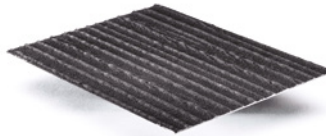
OUR SOLUTION? TRITON CEMFLEX STEEL WATERBAR

Triton Cemflex Steel Waterbar is a galvanised steel plate encapsulated in a special patented coating that reacts only with the water within the concrete to provide a watertight joint. It is designed for use in all non-movement construction joints in reinforced concrete – and is especially suited to ICF or twin wall installations.

FEATURES:

- BBA certified (15/5194) to 5 bar water pressure (with a safety factor of 2.5)
- May be installed before the concrete is poured by positioning to steelwork or installed directly into the fresh concrete after pouring
- Fully waterproof – no need to protect from rain
- Requires only 30mm of concrete cover to function correctly – ensures non-interference with the first lower linkage of the ICF block or wall panel
- Suitable for both vertical and horizontal applications
- No sticky protective tape to be removed prior to use
- Quick and easy to install without welding or specialist fitting equipment
- Excellent bond with the concrete
- Crystallisation properties of the patented coating seal cracks adjacent to the waterbar in the concrete

Size: Supplied in 2M lengths x 100mm or 150mm wide x 1.25mm thick



Triton Contact Details:

For more information please contact us on **01322 318 830** or email: technical@tritonsystems.co.uk

Triton Systems Ltd.

Units 3 – 5 Crayford Commercial Centre, Greyhound Way, Crayford, Kent DA1 4HF

Tel: 01322 318 830

Fax: 01322 524 017

Email: info@tritonsystems.co.uk

www.tritonsystems.co.uk