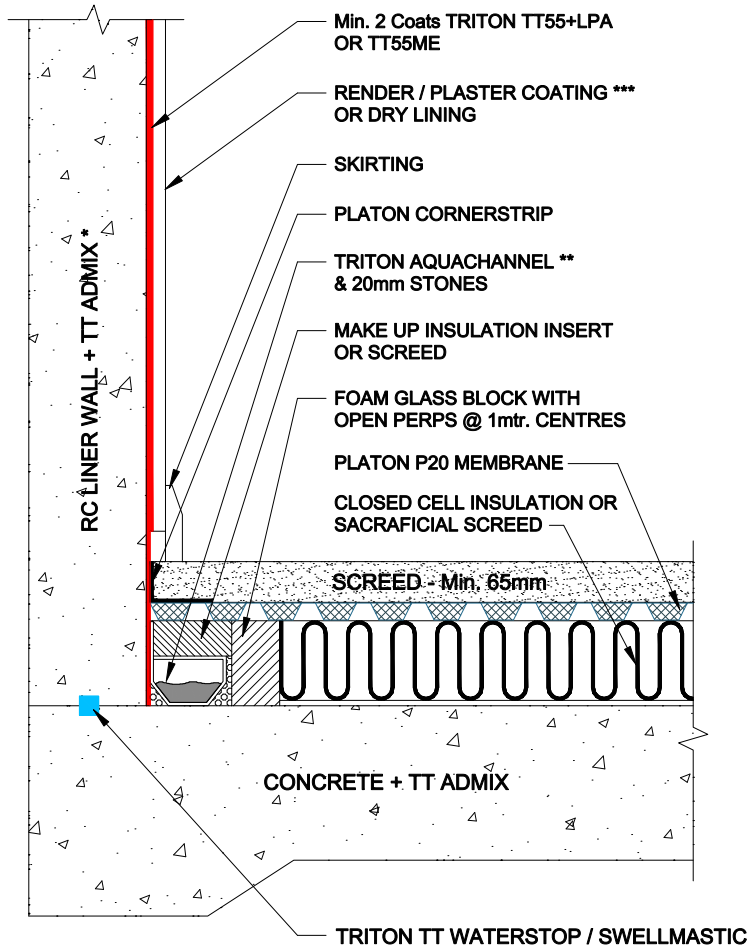
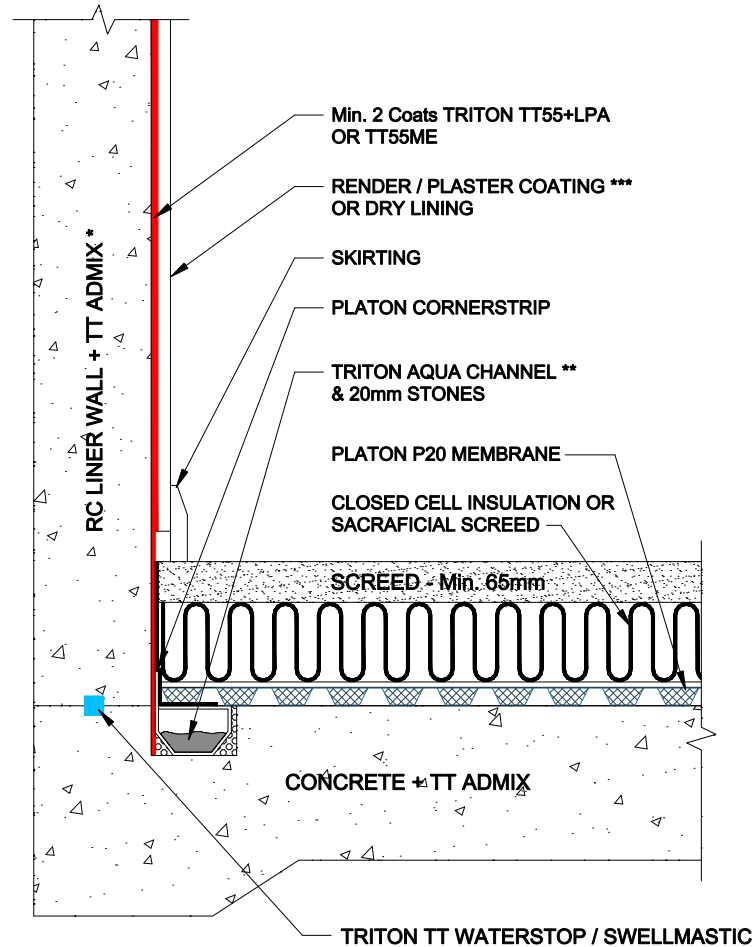


OPTION 'A'



OPTION 'B'



This option illustrates the installation of Triton Aquachannel on top of a slab with inlaid insulation and membrane to floor

* If TT Admix is negated, apply an anti-lime coating such as Triton Concrete Sealer and hardener

** Refer to Triton Technical Dept. for rodding eye details

*** If liquid render is used, apply water proofer to walls



www.tritonsystems.co.uk

Triton Systems

Units 3 - 5 Crayford Commercial Centre
Greyhound Way, Crayford, Kent. DA1 4HF

Telephone: **01322 318830**

Fax: **01322 524017**

Email: **info@tritonsystems.co.uk**

Web: **www.tritonsystems.co.uk**

THIS DRAWING IS THE PROPERTY OF TRITON SYSTEMS AND MUST NOT BE LOANED OR COPIED WITHOUT PRIOR WRITTEN CONSENT

© 2012 TRITON SYSTEMS

NOTE

ALL INSTALLATION TO BE CARRIED OUT IN STRICT ACCORDANCE WITH MANUFACTURERS INSTALLATION INSTRUCTIONS. FOR FURTHER ASSISTANCE CONTACT TRITON TECHNICAL ON THE TELEPHONE NUMBER ABOVE.

REV.	MOD. BY	DATE	CHK. BY	APP. BY
------	---------	------	---------	---------

Alterations

TITLE:
Concrete Basements
Combination System: Types A + C
Ref: BS8102.2009

DRG. No.	TWS-069-1(D)	REV	1
-----------------	---------------------	------------	----------

DRAWN	KD/JDF/FTC	System Files:
DATE	12th November 2012	
SCALE (A3)	Not To Scale	TWS-069-1(D).pdf TWS-069-1(D).dwg
CHECKED		
APPROVED		