



Triton TT55 Tanking Slurry



Description and Use

Triton TT55 is a single component polymer modified cement based protective and waterproof slurry coating. When mixed and applied correctly it forms a highly effective damp proof membrane that can be applied to sound brickwork, concrete, concrete blockwork or any cementitious substrate. Radon resistant when applied at 5mm thick (dried film).

Preparation

- All surfaces to be coated with Triton TT55 must be free of all loose materials, dust, dirt, plaster, bitumen, oil, paint, etc. and of a sound nature, to maximize adhesion to the original structure. This is best achieved by sand/shot blasting, scabbling or bush hammering.
- Once the surface has been prepared it should be pressure washed to remove any remaining dust. The substrate should be free of pooling or surface water. Running water should be stopped using Triton Quick Set (see separate data sheet).
- Pre-wet the substrate, if dry, before application. Allow the water to soak in before continuing
- For application to floors, the floor screed must be removed, down to the original slab. The slab must sound and free from cracks.

Application

- When applying to old brick or blockwork walls, apply a 10mm backing render coat using 3:1, washed sharp sand: Sulphate Resisting Portland Cement with Triton TRIMIX 1 Render Additive in the gauging water.
- In areas of high hydrostatic pressure, the surface should be prepared as above, but the first render coat should be mixed using Triton SBR diluted 1:4 with clean water to form the gauging solution (do not use TRIMIX 1 in this application).
- Apply the Triton TT55 when the render has set but is still 'green' and damp. Pre-wet the substrate if necessary, as described above.
- Triton TT55 can be applied using trowel, brush or spraying equipment, ensure that an even coat is applied and that all crevices and irregularities are filled. Apply at a maximum rate of 1.5kg/sqm or 1mm thick per application. Apply two or three coats at a maximum total rate of 3kg/sqm. A 20kg bag will cover 7 sqm.
- When coating walls, particular attention is needed at the wall/floor junction.
- Coat walls and lap (approximately 225mm) Triton TT55 on to the floor, form a fillet at the wall to floor junction using Triton Fillet Seal.
- Coat floor with Triton TT55 and overlap up wall (approximately 225mm), encapsulating the fillet seal in the process. Triton TT55 is not a wearing finish for floors and should be screeded before it has fully cured.
- Once Triton TT55 has gone green (started to set) the top render coat can be applied if required using 4:1 washed sharp sand: Ordinary Portland Cement or suitable renovating plaster.
- The finish coat should be a porous skim plaster, applied when the cement render coats are fully cured, bonding or skimming plaster should not be applied directly to the Triton TT55 layer.
- Once replastering is complete and dry, trade matt emulsion can be applied (NO WALLPAPERS OR OIL BASED PAINTS).

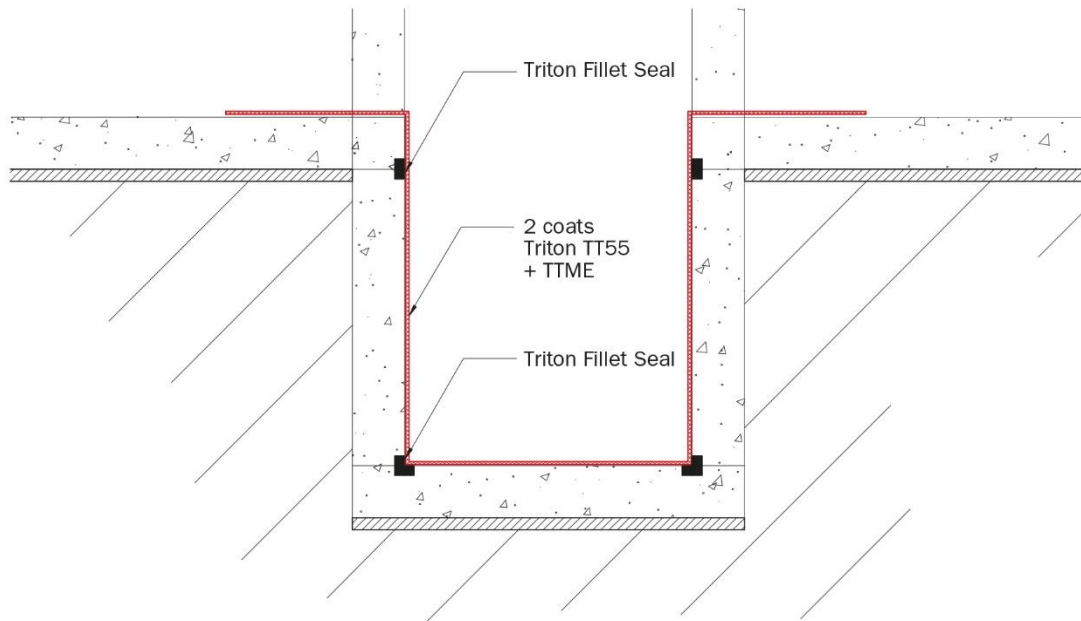
Mixing

- Place 20kg Triton TT55 into a clean container. Add 3.2-4.0 litres of clean water or gauging solution* and stir using a mechanical whisk for approximately 5 minutes. Ensure that the TT55 has fully dispersed and that the mix is smooth and lump free. Use less water if applying by trowel (3.2-3.6 litres)
- * Gauging Solution – 4 parts clean water: 1 Part Triton SBR.
- Re-stir as necessary to maintain workability, do not add additional water or gauging solution. Use within 1 hour of mixing.

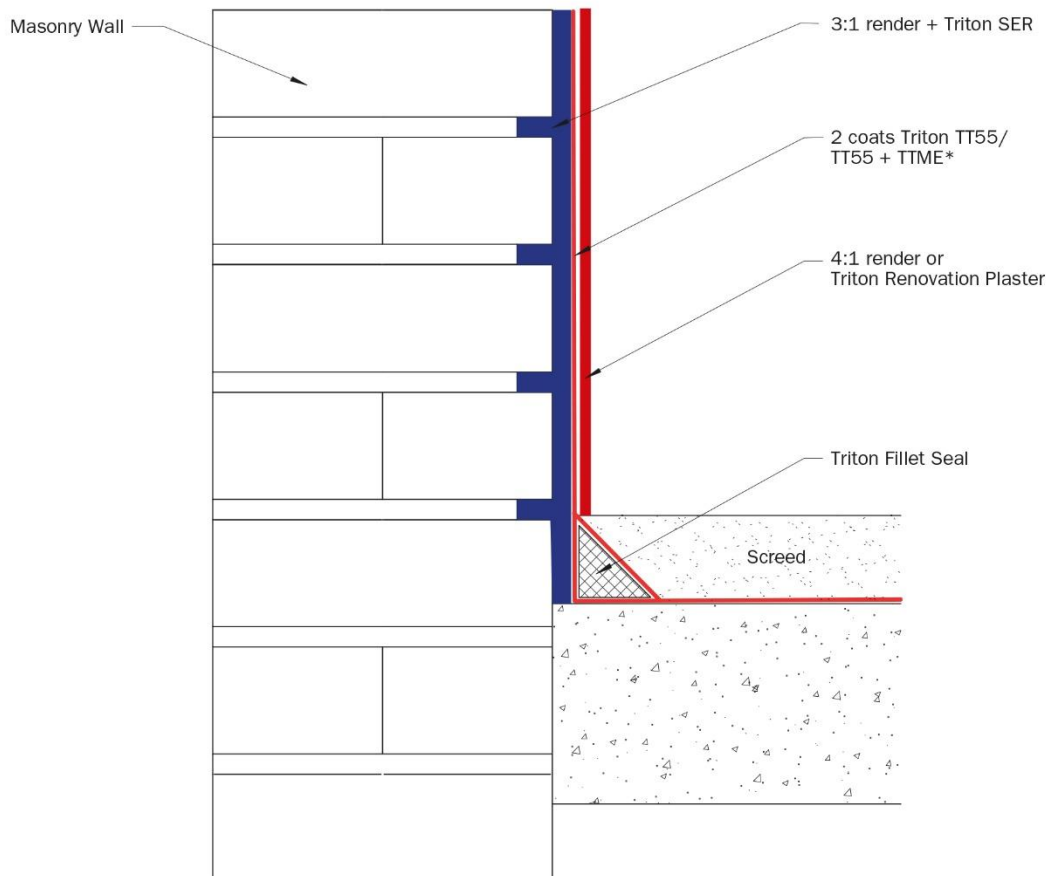
Technical Data

Mixed Density	2000 Kg/M ²
Open Time / Working Time	25-30 minutes at 20°C
Minimum application temperature	+5°C
Maximum application temperature	+30°C
Number of coats required	Two/Three
Compressive Strength	Minimum 30N/MM at 28 days
Adhesion	2-3N/MM
Colour	Grey

WATERPROOFING LIFT PIT



TRITON TT55 TO MASONRY WALLS + WALL/FLOOR DETAIL



PLEASE NOTE: For non-structural slabs, please consult Triton Technical Department.

* Where movement or vibration may be anticipated.

Storage and Handling

- Avoid breathing dust.
- Wear gloves and eye protection.
- Wash hands and exposed skin after use.
- Must be stored in dry frost-free conditions.
- If bags are stored correctly and unopened, they have a shelf life of 12 months.
- Packed in 20kg bags or Tubs.

Curing

- During cure, suitable protection must be given to the treated areas. Cover with polythene sheeting or damp hessian if it is likely that the coating will dry out before full cure is achieved.
- Protect from direct sunlight, strong wind, rain and water splashes, until fully hardened.
- NOTE: During the initial stages of curing, condensation may form on the surface of the TT55 and appear as water droplets. This 'sweating' is caused by atmospheric conditions and is not a sign of failure.

Consumption

- Two coat application – 3kg/m² (1.5kg/m² per coat)
- Maximum total thickness of layers= 5mm

Specification

- Conforms to Type A Barrier Protection in Accordance with BS8102 Grades 1, 2 & 3.
- NBS: Clause J10 110 Cement mortar tanking / damp proofing.

Related products

- Triton Quick Set – Rapid setting water plugging compound.
- Triton Fillet Seal – Special mortar mix for filling joints, holes etc. and for forming wall to floor junctions.
- TT55ME – TT55 modified with TTME polymer admixture for increased flexibility and adhesion.
- TT Super – Crystallizing, cement based concrete coating for waterproofing and anti-lime properties.

Triton Contact Details:

Triton Systems
Units 3-5 Crayford Commercial Centre, Greyhound Way, Crayford, DA1 4HF.

Tel: 01322 318830

Fax: 01322 524017

Email: info@tritonsystems.co.uk

www.tritonsystems.co.uk