

### TRITON AQUACHANNEL



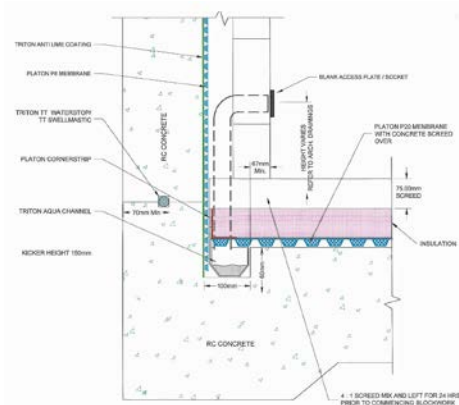
#### DESCRIPTION

**TRITON AQUACHANNEL** is used in conjunction with Platon Cavity Drain membranes to provide a reliable and maintainable drainage system as part of an internal waterproofing specification. **TRITON AQUACHANNEL** is usually located at the base of earth retaining basement or below ground walls, at the edge of the floor slab, to collect and manage away water which might come in from above, through the wall or via the potentially vulnerable wall to floor junction. **TRITON AQUACHANNEL** is moulded from P.V.C. to make an enclosed conduit which allows water to move freely and which is maintainable over the long-term.

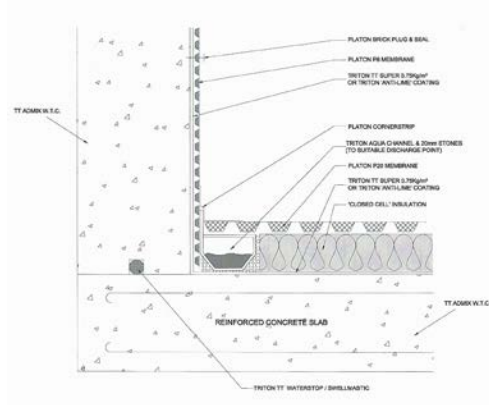
**TRITON AQUACHANNEL** is not a “gutter” but provides a clear space for water to flow through, connecting directly to sump and pumps or via outlets running from Drain Finials or bottom outlets (110mm or 40mm). The water enters through 19mm holes in the angled rear face.

#### USAGE

**TRITON AQUACHANNEL** can be used in new-build, conversion or renovation projects. **TRITON AQUACHANNEL** is usually placed within a pre-formed recess in the ground bearing slab or on top of it in conjunction with a layer (50mm min) of sacrificial screed or waterproof insulation. It can also be retained inside a bund - itself sealed with TT.55/LPA waterproof slurry coating or TT Vapour Membrane.



TWS-022-1(C)



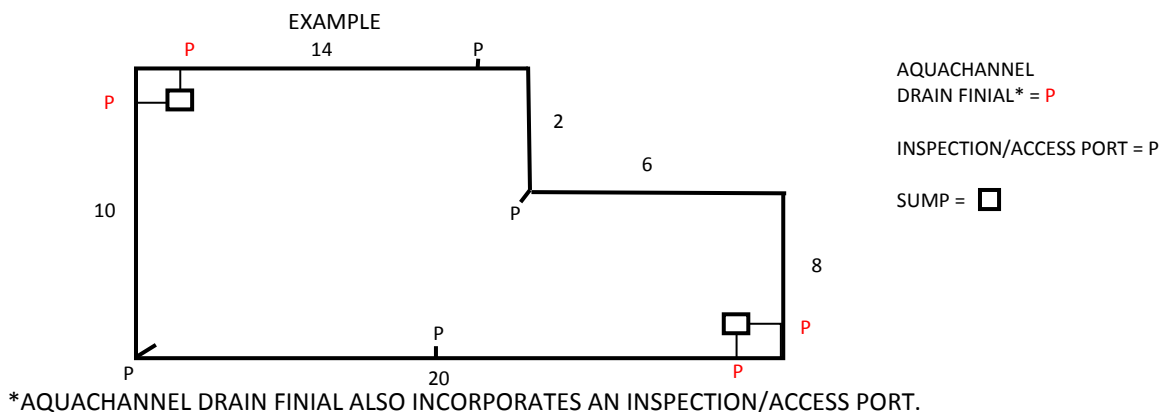
TWS-066-1(D)

### SYSTEM COMPONENTS

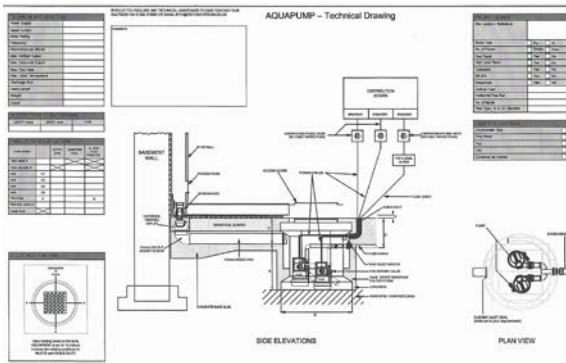
<b>AQUACHANNEL CONDUIT:</b>	2m long with upstand – 80mm wide by 50mm high – 105mm to top of upstand. Also available with no upstand.
<b>AQUACHANNEL CORNER:</b>	Swept 90° corner piece. Available bare or with an inspection / access port fitted.
<b>AQUACHANNEL 'T':</b>	'T' piece for connecting floor channel to the main run. Available bare or with an inspection / access port fitted.
<b>AQUACHANNEL IN-LINE INSPECTION PORT:</b>	200mm piece of channel with an inspection / access port fitted.
<b>AQUACHANNEL CONNECTOR:</b>	Quick and simple joining together of sections.
<b>AQUACHANNEL DRAIN FINIAL:</b>	Connects to 110mm 'pop-up' pipework running directly to a sump.
<b>AQUACHANNEL OUTLET:</b>	200mm piece of channel with a 90° pipe outlet (40mm) in the base.
<b>AQUACHANNEL END OUTLET / CAP:</b>	Used to connect 40mm pipework to the end of an Aquachannel run or to provide an end-stop.

### INSTALLATION REQUIREMENTS

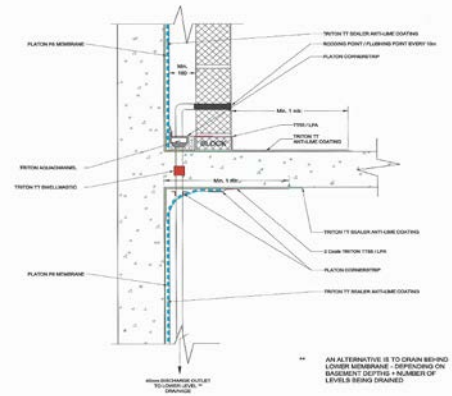
<b>RECESS INSTALLATION:</b>	100mm wide x 60mm deep recess/rebate as a minimum, formed or excavated level, no fall required. Pack with 20mm clean gravel if the recess is larger e.g. if cut out from an existing floor.
<b>ON-SLAB INSTALLATION:</b>	50mm (min) depth of conventional screed or closed cell, waterproof EPS insulation (minimum compressive strength 300 k.p.a).
<b>OUTLETS FROM AQUACHANNEL TO SUMP:</b>	Two minimum. Maximum linear run of Aquachannel for any one outlet: 25m. Maximum total linear run of Aquachannel for any one sump: 50m.
<b>DISTRIBUTION OF INSPECTION/ACCESS PORTS:</b>	Maximum of 12m apart on straight runs. Also placed at corners to give best coverage, in conjunction with the other ports.



Before any Platon Cavity Membrane or Aquachannel is installed, all surfaces must be treated with Triton Anti-Lime Coating or Triton TT Super to control and minimise the movement and leaching out of “free-lime” from the substrate. Concrete which contains Triton TT Admix waterproofing additive does not need to be treated.



TWS-055-1(C)



TWS-031-1(C)

**TRITON AQUACHANNEL** is used in conjunction with Platon Cavity Drain Membranes to create maintainable internal waterproofing systems (Type C, as described in BS 8102: 2009) which can be used in conjunction with other forms of waterproofing protection to produce combined or dual waterproofing systems, this might include, for example, Triton TT Admix in the reinforced concrete structure ( Type B) or Triton TWS-EX100 sheet membrane ( Type A) . These combined systems reduce the risk and consequences of failure, again as laid out in BS 8102: 2009 and are recognised by Building Warranty providers such as NHBC, Premier, LABC, etc. as being the minimum option.

### TECHNICAL ASSISTANCE

TRITON provide product specification services, on-site assistance and product training. Technical staff are CSSW qualified. Visit [www.tritonsystems.co.uk](http://www.tritonsystems.co.uk) to access a full range of Data sheets, installation guides, typical drawing details and BBA certificates, etc.

### RELATED PRODUCTS

- PLATON Cavity Drain Membranes: P8, P20, Plaster Mesh, Plasterbase etc.
- Aqua Pump Pro and XL Sumps and Pumps.
- TRITON TT-55 and TT Vapour Membrane coatings.

### ADDITIONAL DATA

- Platon Installation Manual.
- Aquachannel accessories data sheet.

For further information please contact:

#### TRITON SYSTEMS

Units 3-5 Crayford Commercial Centre  
Greyhound Way, Crayford DA1 4HF  
Tel: 01322 318830 Fax: 01322 524017

[www.tritonsystems.co.uk](http://www.tritonsystems.co.uk)  
[info@tritonsystems.co.uk](mailto:info@tritonsystems.co.uk)

Ref: 10/18 DATA. TRITON AQUACHANNEL